

AddPac GSM VoIP Gateway AP-GS5000



VoiceFinder AP-GS5000 80-Port GSM VoIP gateway provides high-performance IP to GSM gateway solution including IP-routing services for large enterprise, GSM call termination service provider and other public offices. This product uses the state-of-art technology voice compressed algorithm and unique QoS algorithm of AddPac to maintain the maximum voice quality under fast internet line and slow internet line as well. This product uses the state-of-art technology voice compressed algorithm and unique QoS algorithm of AddPac to maintain the maximum voice quality under fast internet line and slow internet line as well. AP-GS5000 Multi-SIM GSM Gateway supports AP-N1-GSM8S4 Quad(4)-SIM GSM VoIP Module. AP-N1-GSM8S4 GSM VoIP Module is a new 8-Port GSM Module (4 SIM card slots per GSM Port) for GSM Call Termination Service. This GSM VoIP Module supports Quad-Band (850/900/1800/1900MHz) GSM frequency, Quad(4) SIM card slots per a GSM port, Hot-Swap Switch Button, Two(2) GSM Antenna Interface. This GSM module has thirty-two(32) GSM SIM card slots internally. Also this module supports the Voice DSP for GSM call termination service based on VoIP

Technology. AddPac VTO service is a high performance VoIP Traffic Optimization service which can reduce bandwidth usage in VoIP call termination. This means that call termination service provider can deliver improved VoIP calling service with much lower VoIP traffic cost. Also, AddPac VTO service supports the VoIP anti-blocking service features and can help to provide mobile VoIP termination service in locations where VoIP service is completely blocked. In addition to basic VoIP Traffic Optimization service features, AddPac VTO service supports real-time VoIP traffic monitoring service such as VoIP packet loss rate, up/down link status, etc in between VTO server and VTO client site each. This can help to provide real-time VTO technical support service AddPac VTO service is very easy to use because AddPac GSM VoIP gateway provides the VTO client service features internally besides GSM VoIP gateway service features. This means there is no need an external Linux server for VTO service and complex installation procedure. User just does new firmware upgrade for AddPac GSM gateway VTO client package. GSM VoIP gateway service concept supporting VTO client service is a new architecture and design concept. This concept reduces the hop count and enhances the VoIP QoS like as jitter, delay. As a result, this architecture increases the ASR, ACD that are most important factors in call termination service area.

Major Feature

Overall Features

- VTO(VoIP Traffic Optimizer) + GSM Gateway Hybrid Architecture
- AddPac VTO(VoIP Traffic Optimizer) Service Client : VTO Plug & Play Service, Anti-VoIP Block, Bandwidth Compression, VoIP Traffic Monitoring (Packet loss, round-trip time), etc
- Renew the Main Window
- Mobile Statistics Display using Graph Chart (ASR, ACD, etc)
- Several Enhancements for ASR Improvement (zombie call, etc)
- Human Behavior Call Pattern Modeling Algorithm (Inbound call, SIM-to-SIM call)
- Powerful RISC Microprocessor + DSP Architectures
- Two(2) 10/100/1000Mbps Gigabit Ethernet Interfaces for WAN,LAN
- Maximum 80-Port GSM Interface Support (Ten(10) Module Slots)
- 8-Port GSM Module Hardware Architecture
- IMEI change, BTS Selection, Remote SIM Server Support
- 1-Port RS-232C Console Interface for CLI
- SIP protocol support compliant with IETF RFC3261 (or RFC2543)
- Supports dual VoIP signaling stack of H.323 and SIP
- APOS Internetworking Software to provide Scalability, Functionality, Stability, and QoS Control for AddPac VoIP Gateway
- High-performance IP-Routing Capability with Reliability
- Enhanced QoS Managements for Voice Traffic
- SNMP MIB v2 for Network Management Features
- Essential Scalability Features such as DHCP Server & Relay, NAT/PAT, IEEE Transparent Bridging, IP Accounting, and Debugging/ Diagnostics, etc.
- Remote Software Upgrade using FTP & TFTP



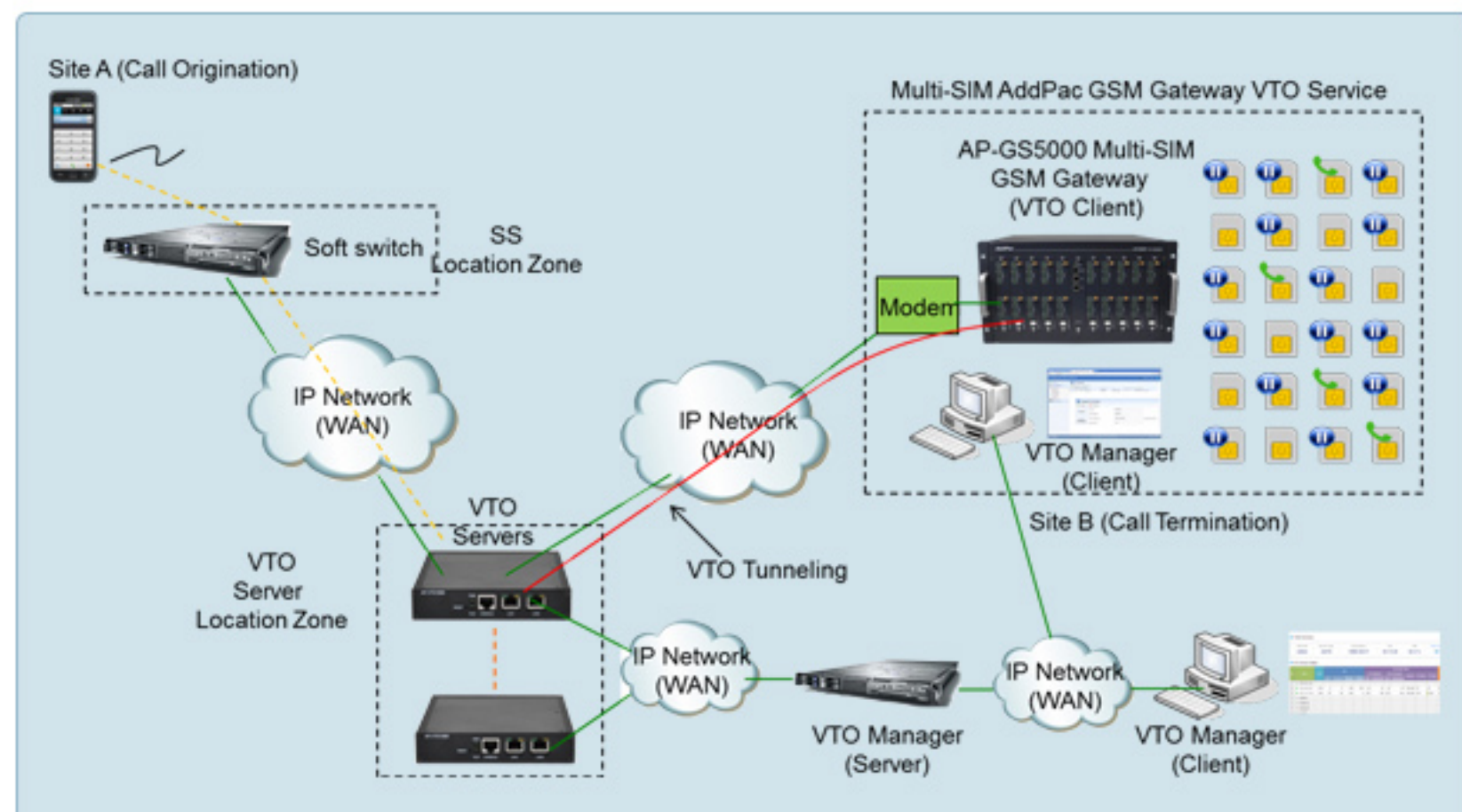
VTO Service Lists

VTO Service List	Description
VoIP Traffic Compression Service	Proprietary Algorithm
VoIP Anti-Block Service	Proprietary Algorithm
Plug & Play VTO Service	No Need Linux Server for VTO Client AddPac GSM Gateway support VTO Client.
VoIP Traffic Monitoring Service	To Termination : Raw Data, Compressed Data, Packet Loss From Termination : Raw Data, Compressed Data, Packet Loss Round-Trip Delay CDR Information : No Need Soft-switch for CDR
VoIP Traffic Call Re-Routing Service	VTO Server Interworking with GSM Gateway (SIM Block, GSM Port Fault, etc)
GSM Gateway Web Connection Service*	Remote Access Control Service for AddPac GSM Gateway Management, No Need Team Viewer

Hardware Specification

Model	AP-GS5000
Available Modules	AP-N1-GSM8 AP-N1-FXS8 AP-N1-FXO8 AP-N1-E1 AP-N1-2E1
Multi-SIM GSM Modules	AP-N1-GSM8S4
GSM Channel	Up to 80 Channel
GSM Antenna	Two(2) / 8 Channel GSM Module(AP-N1-GSM8)
Module Slot	Ten(10) Module Slots for GSM, E1/T1 Module Slot
LAN Port	2
Console	1
Power	Dual PSU (module)

Network Diagram



AddPac Technology Co.,Ltd.

AddPac Technology (Korea-Head Office)
 Phone +8225683848
 Email sales@addpac.com